

11th Annual Awards

2006

**BERTL's
BEST**



Best 40 to 49 ppm
Monochrome Office MFP

Ricoh **Aficio MP 4500 Series**

BERTL has awarded the Best 40 to 49 Monochrome Office MFP to the Ricoh Aficio MP 4500 Series. These all-around workgroup powerhouses deliver a feature-rich range of input/output capabilities making the devices true communication hubs in the workgroup environment. In addition to the out-of-box capabilities, Ricoh's Embedded Software Architecture (ESA) allows for even greater functionality and customization.

2006

Aimed at workgroup environments, the Ricoh Aficio MP 4500 Series is available in five pre-bundled configurations: Aficio 3045 (Copy only); Aficio MP 4500SP (Copy, print, and scan); Aficio MP 4500SPF (Copy, print, scan, and fax); Aficio MP 4500P (RPCS Printing); and Aficio MP 4500SPi (Copy, print, scan, and DocumentMall). The DocumentMall element of the SPi includes the ability to route documents to and from Ricoh's hosted Web-based document management application.

Each ledger/A3, 45 ppm MFP includes a standard paper supply of 1,050 sheets (two 500-sheet universal trays and a 50-sheet bypass). Two additional 500-sheet universal trays can be added, along with a side-mounted 1,500-sheet LCT (letter/A4 only) taking the total paper supply up to 3,550 sheets. Ricoh offers several finishing options, which include multi-position stapling, saddle-stitch booklet making, and hole punching.

The Ricoh Aficio MP 4500 Series devices help a busy office run more efficiently with industry-leading productivity features. Fast, convenient communication is easily achieved with the standard (on all but the base and "Print Only" MP 4500 model) scan-to-email, scan-to-folder, scan-to-FTP, and scan-to-URL capabilities.

With standard LDAP, the scan-to-email utility can be integrated with central corporate contact databases. The MP 4500SPi model includes the ability to integrate directly with Ricoh's Web-based DocumentMall document management service.

The Aficio MP 4500 Series devices also feature extensive fax functionality, including cost-and time-saving features that some dedicated fax devices do not include. The Aficio MP 4500 devices can route and forward faxes to an email address and

BERTL

©2006 MCA Internet LLC, dba BERTL. 200 Craig Road, Manalapan, NJ 07726. All Rights Reserved. No copying, distributing, or storage of any kind is permitted. To obtain a reprint license, call (1) 732-761-2311. BERTL® is a registered trademark of MCA Internet, LLC. For information on BERTL reports, awards, and subscriptions, visit www.BERTL.com

Best 40 to 49 ppm Monochrome Office MFP | Ricoh Aficio MP 4500 Series

allow stored files—and even a cover sheet—to be attached. The devices support T.37 and T.38 protocols providing low-cost data transmission over the Internet instead of a phone line.

Some other powerful features packed into the Ricoh Aficio MP 4500 Series are versatile device and document management capabilities. Ricoh's Web Image Monitor enables users to check toner and paper status, see what jobs are in the queue, and view and administer documents stored on the device, all from the user's desktop via a Web browser. It even includes an email notification system.

An alternative to the Web-based Web Image Monitor is the Windows-based SmartDeviceMonitor where multiple devices can be monitored. Document Server, Ricoh's virtual document library for archival and print-on-demand applications, works in conjunction with DeskTopBinder (included as standard) to search, annotate, and combine documents, then print, scan, or fax them.

Adding to the extensive feature set is Ricoh's Embedded Software Architecture—a Java-compatible software development platform—that allows third-party applications to be developed specifically for the device, thus customizing its operation for the user's needs. Some of Ricoh's Open Architecture partners include: eCopy, OmTool, and NSI.

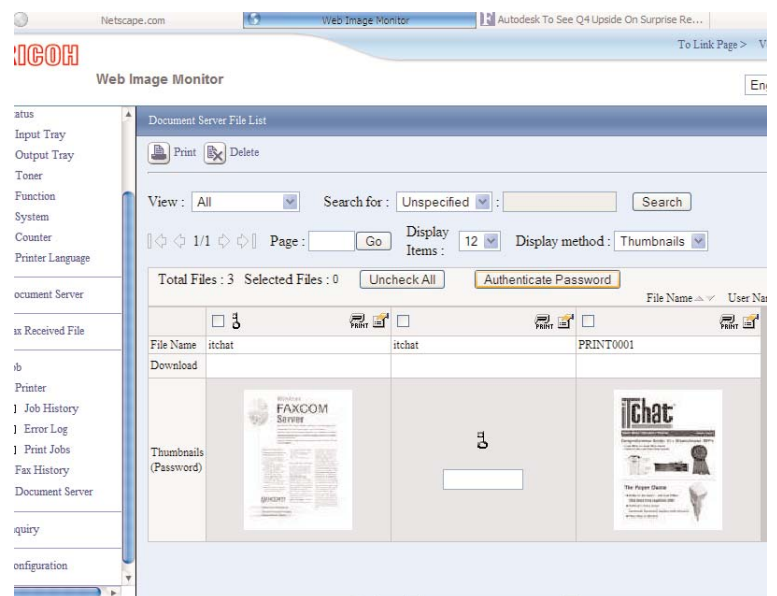
With security playing an ever-increasing role, the Ricoh Aficio MP 4500 Series offers a number of advanced security solutions. Windows/LDAP Authentication requires users to enter a user name and password before being granted access to the device. Access can also be restricted across the network via IP filtering and SNMP v3 support.

The Locked Print Job function enables users to hold jobs in the queue until they enter authorization details. This same lockdown capability can also be used for faxes. Four types of access permissions can be set for documents stored on Ricoh's Document Server: Read-only, Edit, Edit/Delete, and Full Control.

Ricoh also provides hard disk drive security with the removable hard drive option and DataOverwriteSecurity System (DOSS), which overwrites information stored on the hard drive.

Another unique security feature is Ricoh's Unauthorized Copy Prevention Control that embeds a pattern and text into the document. The original text is grayed out when copied on an Aficio MP 4500 Series device equipped with this option.

The devices come with an enviable array of document production capabilities for walk-up users including the ability to incorporate up to three paper stocks into a single job, the addition of page stamps, and watermarks. The standard 80-sheet automatic reversing document feeder can be used with the job build feature to produce output combined from different size/type originals.



Users can view and control jobs through Document Server.

Printing on the Aficio MP 4500 Series (optional on the base model, standard on the other pre-bundled configurations) is powered by a 466MHz processor, with 384MB of maximum memory and a shared 40GB hard drive. Ricoh's wide range of connectivity options include standard 10/100BaseT Ethernet and USB 2.0, with Parallel, Wireless 802.11b, and Bluetooth offered as options.

Standard printer description languages include PCL5c and PCL6. Ricoh's Refined Printer Command Stream (RPCS) with Adobe PostScript 3 is available on the "P" model.

RPCS is the company's proprietary driver utilizing the power of the desktop CPU while taking much of its printing technology from PCL. RPCS offers a custom setting facility where common device settings can be saved under a one-touch template. It also features a range of header and footer information options including date and time stamps, page numbering, and free text.

The optional PostScript 3 driver brings Direct PDF print capability, which allows users to print PDF jobs straight to the device without having to first open Acrobat to submit the job to print.

With its wide range of productivity-enhancing features, flexible desktop and network utilities, and versatility, the Ricoh Aficio MP 4500 Series provides compact, powerful workgroup document processing and distribution solutions.

Spotlight on Ricoh

Ricoh Company Ltd. was founded on February 6, 1936 and has since become a household name within the business industry. Today, Ricoh consists of 347 companies with more than 74,000 employees organized into three major facilities:

- **Manufacturing Facilities:** In charge of OA equipment, supplies, electronic devices, printed circuit boards, electronic components, copiers, fax machines, data processing systems, etc.
- **Research and Development Facilities:** In charge of research, development, technology, manufacturing, venture capital financing, communication-related equipment, etc.
- **Overseas Sales Subsidiaries:** In charge of worldwide marketing.

Ricoh is an active player in many marketplaces around the globe, including the Americas, Europe, Africa, the Middle East, Asia, Oceania, China and Japan. Ricoh has regional headquarters in all of these areas. Ricoh acquired Lanier Worldwide Inc. in 2001.

Ricoh's research and development takes place in its own development centers. The research focus of the centers ranges from extensive research and development, to technical research, product application, product technology and environmental research.

The research and development program at Ricoh focuses on advances in imaging communications, and works with the manufacturing, sales and service operations to develop products and solutions customers need in today's business environments.

BERTL's Best Office Awards

Recognizing the Best in Digital Imaging Technology and Innovation

For 11 consecutive years, BERTL has recognized the best devices and software in the digital imaging marketplace with BERTL's Best awards. Winners are selected after rigorous analysis of the hundreds of digital imaging devices, software, and management utilities in the world-wide marketplace.

This year, the awards are presented in three segments.

Office Awards	Spring, 2006
Software and Solutions Awards	Dates to be announced
Production Awards	Dates to be announced

BERTL's Best Office awards honor digital imaging and document management solutions for business offices of all sizes and vertical sectors. Imaging solutions covered by these office awards include:

Digital Duplicators	General Office Monochrome
Executive Office MFPs	Innovation Awards
General Office Color	Software and Utilities

BERTL's analysts review current product lines and new product introductions to identify the select group of devices and software that stand apart from the others.

Overall business process value is the key consideration in judging which product is BERTL's Best. BERTL analysts take the role of the end user and ask: "How well does this product work in my real-world business setting?"

BERTL combines its wide-ranging knowledge of the competitive landscape and contact with buyers about their product and supplier experiences to identify worthy products. BERTL analyzes network management utilities, concurrency and contention, print and copy productivity, image quality, return on investment, competitive advantage, accessibility, design and build quality, standard functions, modularity of design and upgrade path, installation, and more.

BERTL is 100 percent independent. It receives no funding from the industry and all product evaluations and reports are published at BERTL's own expense for its subscribers.

BERTL publishes the world's largest library of business competitive intelligence for the digital imaging market at www.BERTL.com.